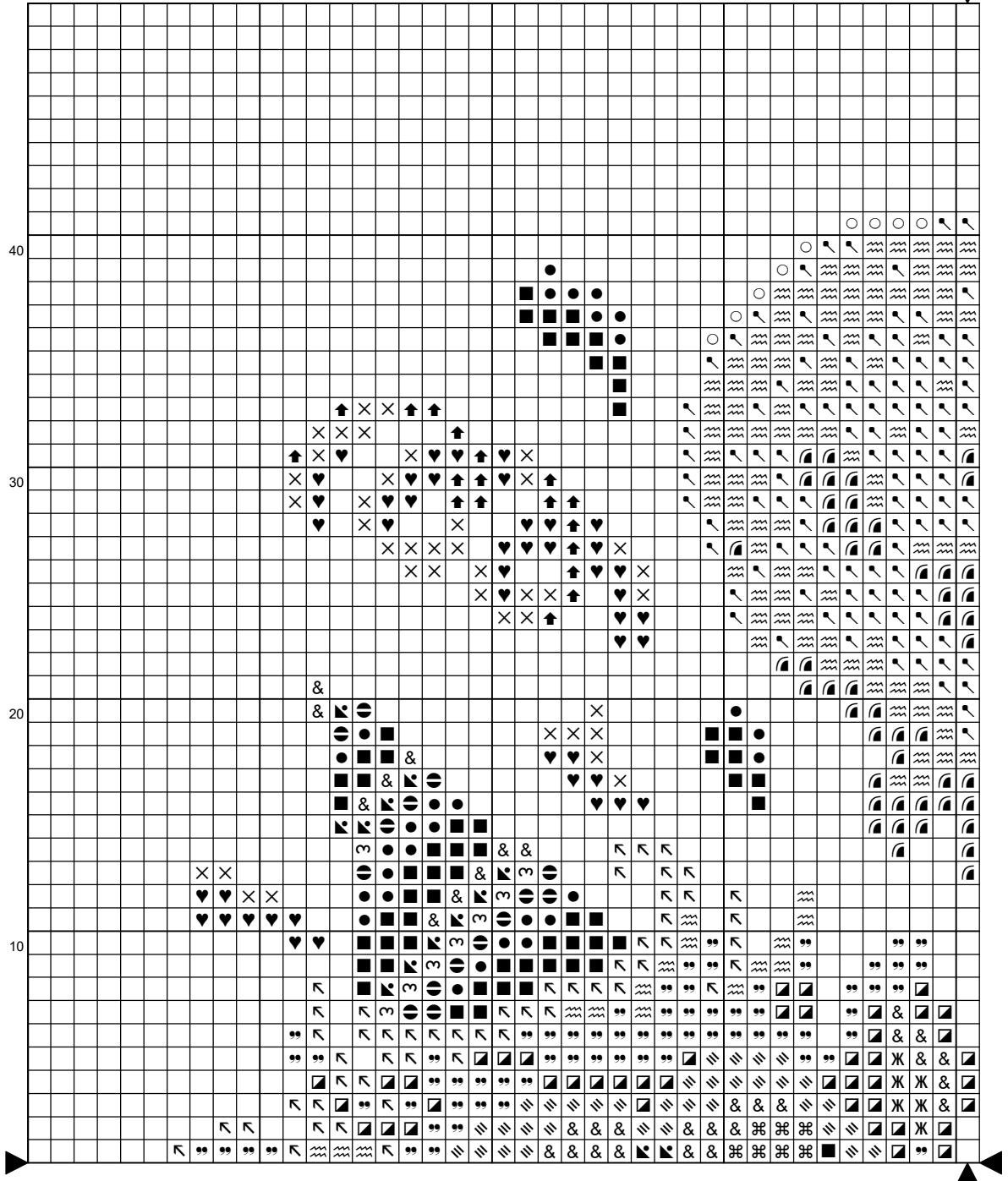
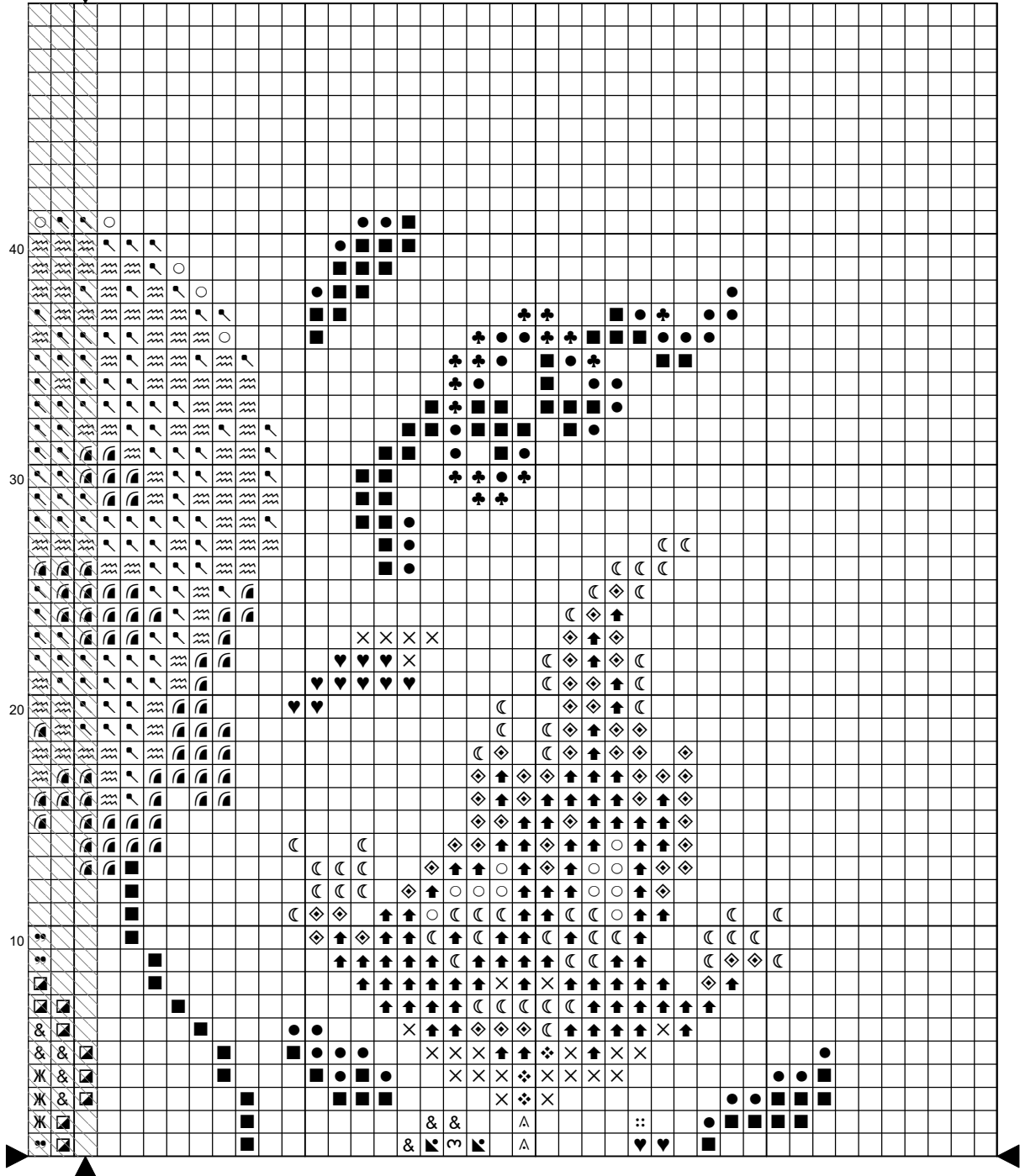


30

20

10

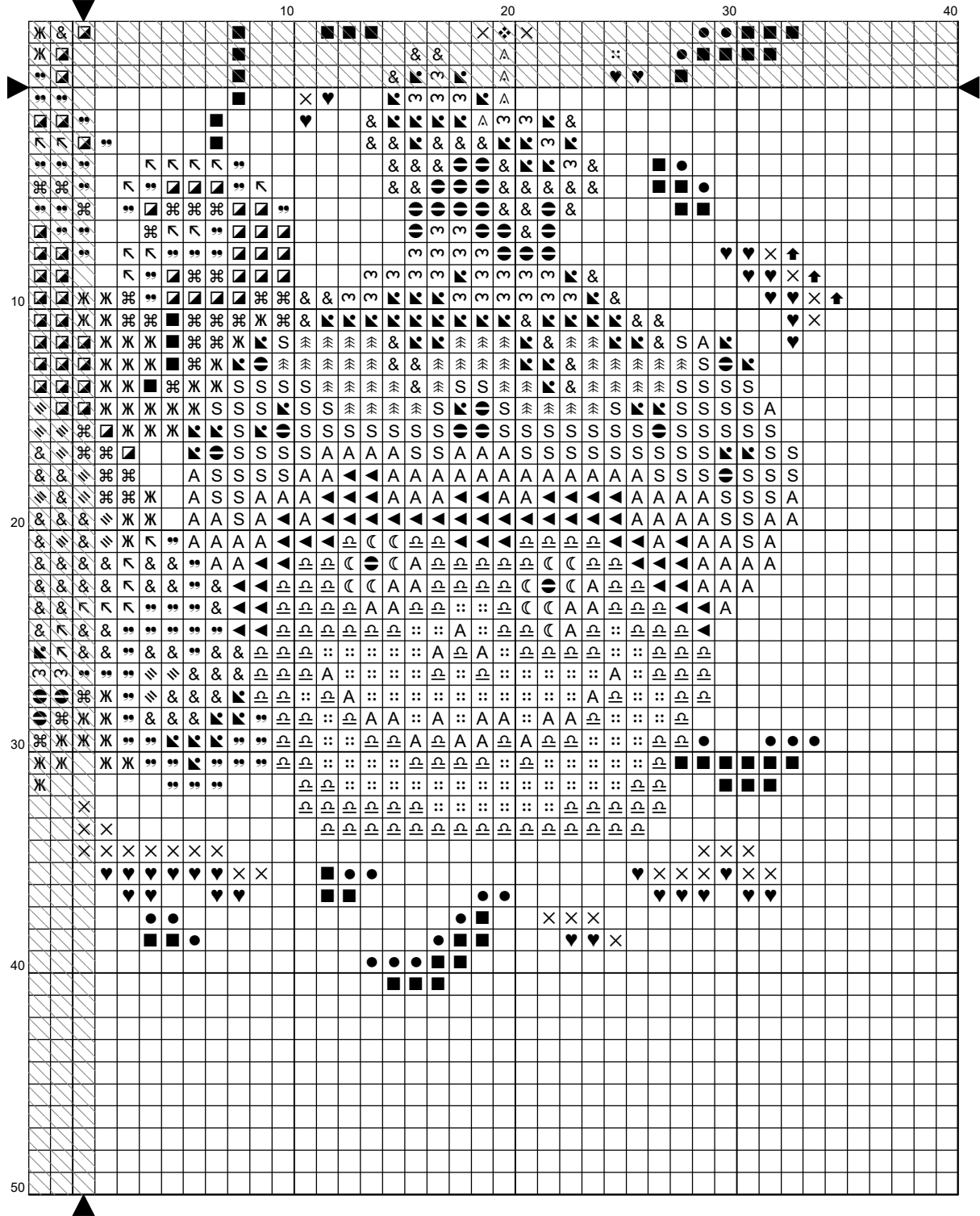




Halloween Party

30 20 10

10 20 30 40 50



Instructions and Symbol Key for Design "Halloween Party"

Fabric: 14 count

Stitches: 69 x 82 **Size:** 4.93 x 5.86 inches or 12.52 x 14.88 cm

Colours: DMC

Use **2** strands of thread for cross stitch

<u>Sym</u>	<u>No.</u>	<u>Colour Name</u>	<u>Sym</u>	<u>No.</u>	<u>Colour Name</u>
A	14	Pale Apple Green	S	16	Light Chartreuse
☉	154	Prune rose	↖	157	Light cornflower blue
&	209	Lilac	≡	210	Light violet
■	310	Black	●	317	Steel grey
♣	318	Granite grey	∞	550	Blackcurrant
⋈	704	Lime green	×	741	Tangerine orange
↑	742	Light tangerine	◇	744	Grapefruit yellow
⋈	791	Dark cornflower blue	⌘	792	Deep cornflower blue
▣	793	Medium cornflower blue	”	794	Baby blue
♥	947	Sunset orange	△	975	Chestnut brown
◀	975	Chestnut brown	▩	3752	Light porcelain blue
⋈	3753	Moonlight blue	↖	3756	Cloud blue
☾	3823	Ivory	❖	3826	Golden brown
▣	3837	Deep violet	⌘	3853	Copper
::	3854	Spicey gold	○	3865	Winter white

This chart has been designed and printed with our best intentions of being without mistakes. However, the possibility of human error, printing mistakes or the variation of individual stitching does exist, and we regret that we cannot be responsible for this.

Note: The shaded blocks on the chart represent overlapping stitches.
 Produced using Cross Stitch Professional for Windows www.dpsoftware.com
 Copyright © To Dye For Fabrics 2025 All rights reserved.