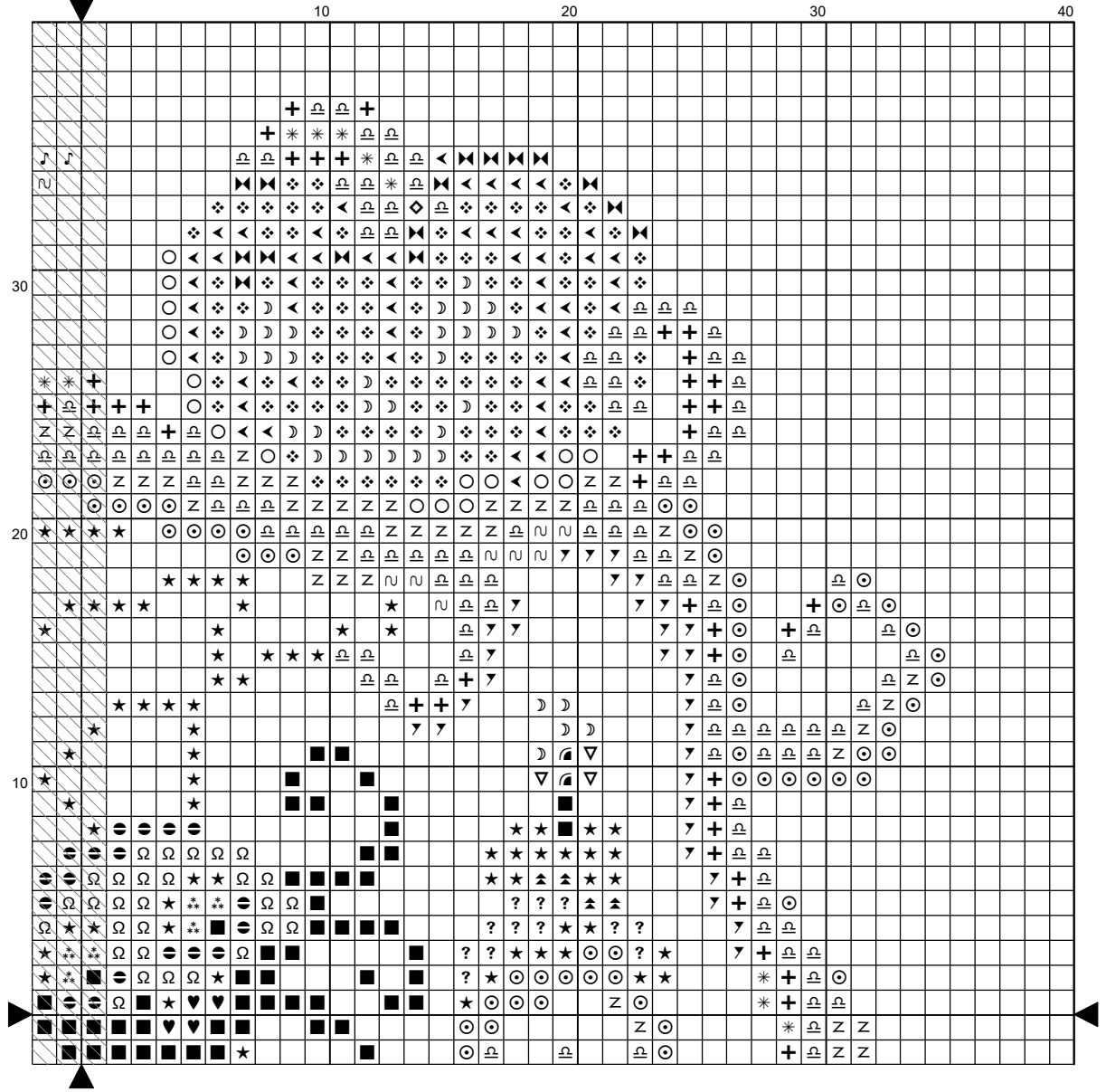


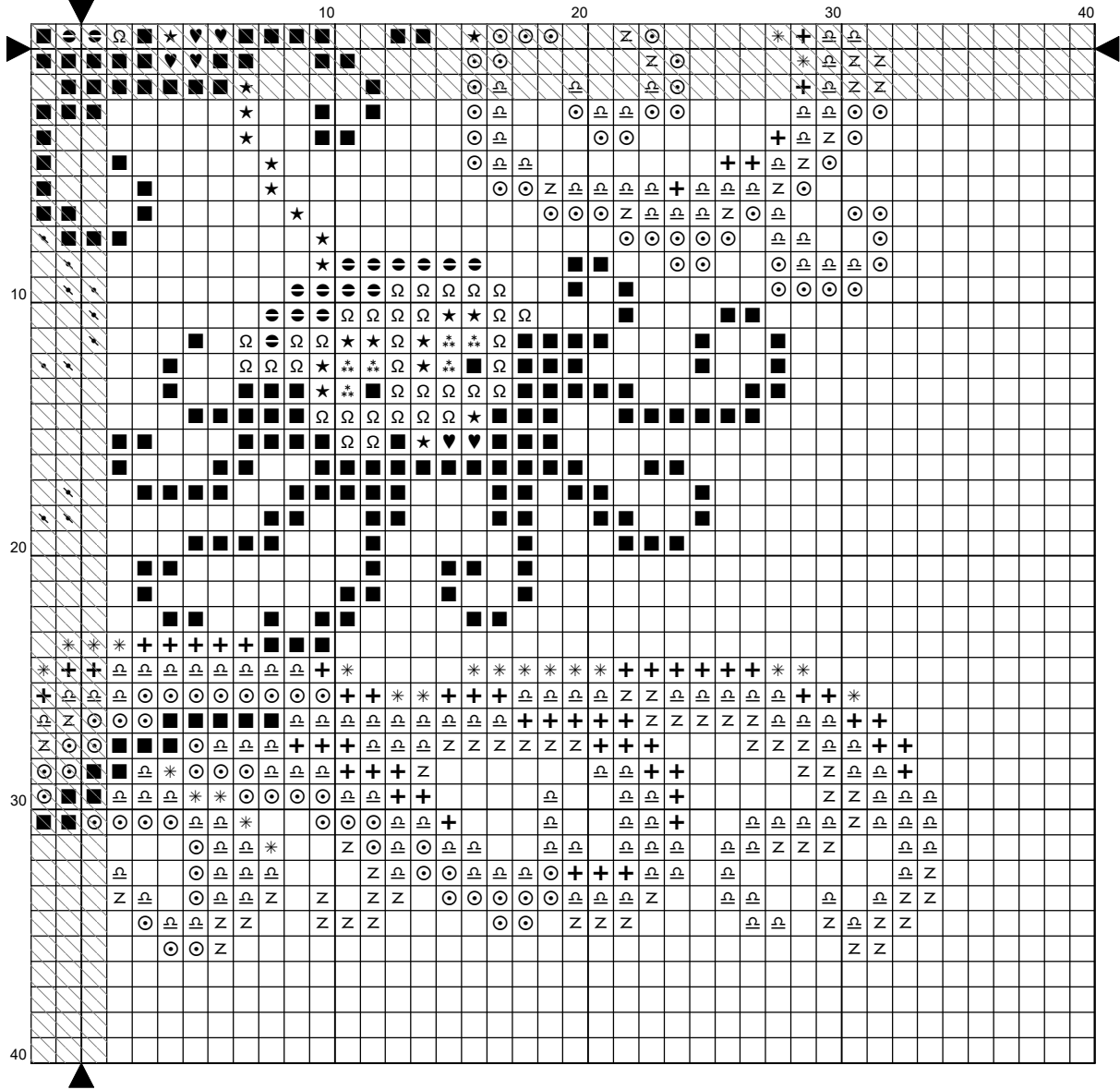
30 20 10

30 20 10

30 20 10







## Instructions and Symbol Key for Design "Spooky Hollow"

---

**Fabric:** 14 count

**Stitches:** 70 x 74                      **Size:** 5.00 x 5.29 inches or 12.70 x 13.43 cm

**Colours:** DMC

Use 2 strands of thread for cross stitch

<u>Sym</u>	<u>No.</u>	<u>Colour Name</u>	<u>Sym</u>	<u>No.</u>	<u>Colour Name</u>
✕	19	Med Light Autumn Gold	♥	22	Alizarin
■	30	Medium Light Blueberry	➤	31	Blueberry
↘	32	Dark Blueberry	5	300	Mahogany
■	310	Black	Ω	317	Steel grey
●	318	Granite grey	✕	400	Brown
≡	414	Lead grey	▲	415	Chrome grey
◇	433	Chocolate brown	♪	434	Cigar brown
∞	435	Tabacco brown	⋅	436	Teddy brown
∇	437	Camel	**	728	Hops yellow
▒	741	Tangerine orange	▽	743	Medium yellow
☾	745	Banana yellow	?	762	Pearl grey
Ψ	783	Old gold	Z	839	Root brown
+	841	Deer brown	*	842	Beige rope
⊙	3031	Dark Mocha brown	○	3826	Golden brown
◀	3853	Copper	❖	3854	Spicey gold
▲	3857	Dark red wine	⊖	3862	Mocha brown
★	3865	Winter white	::	ECRU	ECRUT
				T	

This chart has been designed and printed with our best intentions of being without mistakes. However, the possibility of human error, printing mistakes or the variation of individual stitching does exist, and we regret that we cannot be responsible for this.

Note: The shaded blocks on the chart represent overlapping stitches.  
 Produced using Cross Stitch Professional for Windows [www.dpsoftware.com](http://www.dpsoftware.com)  
 Copyright © To Dye For Fabrics 2025 All rights reserved.